

CABLE PRIMARY CURRENT TRANSFORMERS - STANDARD SERIES



- **Primary current from 40 to 3000A**
- **Inner diameter from 15 to 80 mm**
- **Insulation 0.75/4 kV**
- **Measurement and protection**

Moulded case current transformers for the measurement of AC currents up to 3000A, with inner diameters from 15 to 80 mm.

They are made of a non-flammable material and have heavy insulation. They are equipped as standard with EA type mounting brackets

Technical data

Highest voltage for equipment	750 V
Power-frequency withstand voltage	4000 V
Primary current I _{pn}	40 to 3000 A
Secondary current I _{sn}	5 or 1 A
Frequency	50 or 60 Hz
Rated output	1 to 60 VA
Accuracy class	0.5 - 1 - 3
Security factor	< 5
Continuous thermal current	1.2 I _{pn}
Short-time thermal current I _{th}	80 I _{pn} .1s
Dynamic current I _{dyn}	2.5 I _{th}
Insulation class	E
Ambient temperature	-40 °C to +50 °C
Case	Thermoplastic UL94 V0 or V1
Standards	CEI 44-1 - NF C42502 - VDE 0414 - BS 7626

Other characteristics on request

Highest voltage for equipment	Up to 2400 V
Power-frequency withstand voltage	Up to 11 kV
Secondary current I _{sn}	0.005 to 10 A
Frequency	1 to 10000 Hz
Accuracy class	0.1 - 0.2 - 0.2S - 0.5S - 5P - 10P - cIX
Accuracy limit factor	5 - 10 - 15 - 20 - 30
Multi-ratio	On P25 - P40 - P50 - P60 - P80 models
Multiple cores	On P25 - P40 - P50 - P60 - P80 models
Ambient temperature	-40 °C to +70 °C
Standards	ANSI C57.13 - CAN3 C13 - AS 1675

Accessories / Options

Mounting brackets	EN type depending on models
Strengthened mounting brackets	EB type on P80 model
Sealable terminal cover	Except on 2Psc - 2Msc - 2Gsc models
Tropicalization	

CABLE PRIMARY CURRENT TRANSFORMERS - STANDARD SERIES

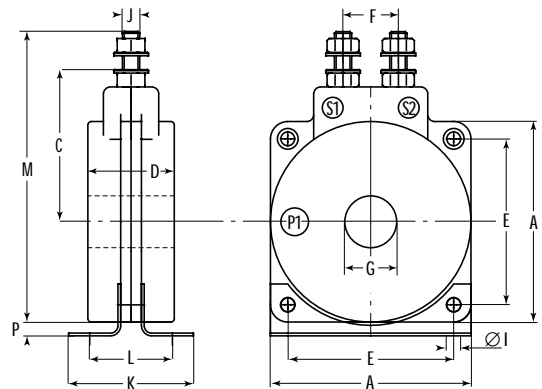
Selection table

Ip A	Type	Output maximum VA			Ip A	Type	Output maximum VA							
		cl 3	cl 1	cl 0.5			cl 3	cl 1	cl 0.5					
40	1Psc	1.25	-	-	200	P40	45	20	15					
	2Gsc	2.5	-	-		P50	20	10	5					
	2Rsc	2.5	-	-		P60	20	10	5					
	P25	5	-	-		P80	45	20	5					
	P40	2.5	-	-		250	2Psc	10	10	5				
	P50	2.5	-	-			2Msc	15	15	10				
	P60	1.25	-	-			2Gsc	30	20	15				
	P80	2.5	-	-			2Rsc	45	30	20				
50	1Psc	1.25	-	-	P25		60	45	30					
	2Msc	2.5	-	-	R36		30	20	15					
	2Gsc	3.75	-	-	P40		45	30	20					
	2Rsc	5	-	-	P50		30	15	10					
	P25	5	1.25	-	P60	20	10	5						
	P40	5	1.25	-	P80	45	20	10						
	P50	3.75	-	-	300	2Psc	10	10	7.5					
	P60	2.5	-	-		2Msc	15	15	10					
P80	2.5	-	-	2Gsc		30	30	20						
60	1Psc	1.25	-	-		2Rsc	60	45	30					
	2Msc	3.75	-	-		P25	60	60	45					
	2Gsc	5	-	-		R36	45	30	20					
	2Rsc	7.5	2.5	-		P40	45	30	20					
	P25	10	2.5	-		P50	45	30	15					
	P40	7.5	1.25	-	P60	30	20	15						
	P50	5	1.25	-	P80	45	30	15						
	P60	3.75	-	-	400	2Psc	15	10	10					
P80	5	1.25	-	2Msc		20	20	15						
75 or 80	1Psc	3.75	-	-		2Gsc	30	30	30					
	2Psc	2.5	-	-		2Rsc	60	60	45					
	2Msc	5	1.25	-		P25	60	60	60					
	2Gsc	7.5	2.5	-		R36	45	30	20					
	2Rsc	10	3.75	-		P40	60	45	30					
	P25	15	3.75	-		P50	45	30	20					
	P40	10	2.5	-	P60	45	30	15						
	P50	10	2.5	-	P80	60	45	30						
100	1Psc	5	2.5	-	500	2Psc	15	15	10					
	2Psc	5	-	-		2Msc	20	20	15					
	2Msc	7.5	2.5	-		2Gsc	45	45	30					
	2Gsc	10	5	1.25		2Rsc	60	60	45					
	2Rsc	15	5	-		P25	60	60	60					
	P25	20	10	5		R36	45	30	20					
	P40	15	5	2.5		P40	60	60	45					
	P50	15	3.75	1.25		P50	60	45	30					
125	1Psc	5	3.75	-	P60	45	30	20						
	2Psc	5	2.5	-	P80	60	60	45						
	2Msc	10	5	-	600	2Psc	15	15	10					
	2Gsc	15	7.5	3.75		2Msc	30	20	15					
	2Rsc	20	10	3.75		2Gsc	60	45	45					
	P25	30	10	5		2Rsc	60	60	60					
	P40	20	7.5	5		P25	60	60	60					
	P50	15	5	3.75		R36	45	30	20					
P60	10	5	-	P40		60	60	45						
P80	20	5	2.5	P50		60	45	30						
150	1Psc	5	5	-	P60	45	30	20						
	2Psc	5	2.5	1.25	P80	60	60	45						
	2Msc	10	7.5	3.75	750 or 800	P40	60	45	30					
	2Gsc	20	10	5		P50	60	45	30					
	2Rsc	30	15	7.5		P60	45	30	15					
	P25	45	20	10		P80	60	60	45					
	P40	20	10	7.5		1000	P40	60	45	30				
	P50	20	10	5			P60	45	30	15				
P60	15	7.5	3.75	P80			60	60	45					
P80	20	10	5	1250			P40	60	45	30				
200	2Psc	10	5		2.5		P60	45	30	15				
	2Msc	15	10		7.5		P80	60	60	45				
	2Gsc	20	20		10		1500	P80	60	60	45			
	2Rsc	30	20		15			1750	P80	60	60	45		
	P25	45	30		20	2000			P80	60	60	45		
	P36	30	20		15				2500	P80	60	60	45	
	3000	P80	60		60					45	3000	P80	60	60

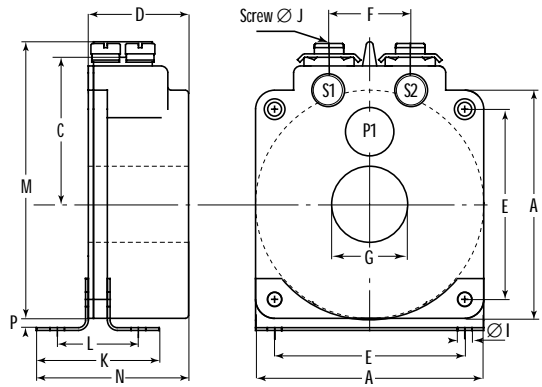
Dimensions

Type	A	C	D	E	F	G	I	J	K	L	M	N	P
	mm	mm	mm	mm	mm	mm	mm	mm	mm	mm	mm	mm	mm
1Psc	58	45	25	48	16	15	4.2	M 5	36	23	84	-	4
2Psc	66	43	23	55	25	22	4.2	M 5	36	24	80	39	3.5
2Msc	66	43	29	55	25	22	4.2	M 5	36	24	80	45	3.5
2Gsc	66	43	47	55	25	22	4.2	M 5	36	24	80	64	3.5
2Rsc	85	59	52	70	25	25	4.2	M 5	62	38	111	-	4.5
R36	85	59	52	70	25	36	4.2	M 5	62	38	111	-	4.5
P25	104	68	56	86	35	25	6.3	M 5	66	42	130	-	5
P40	104	68	56	86	35	40	6.3	M 5	66	42	130	-	5
P50	104	68	56	86	35	50	6.3	M 5	66	42	130	-	5
P60	104	68	56	86	35	60	6.3	M 5	66	42	130	-	5
P80	155	62	56	137	30	80	6.3	M 5	66	44	-	78	5

1Psc - 2Rsc - R36 - P25 - P40 - P50 - P60



2Psc - 2Msc - 2Gsc



P80

